

REVIVA

Sample Renders: Accommodation Exteriors

Features:

- Traditional rustic *finca* or *cortijo* style
- Large windows with shutters
- Relaxing neutrals and earth tone materials
- Landscaped gardens with a range of activity and quiet spaces



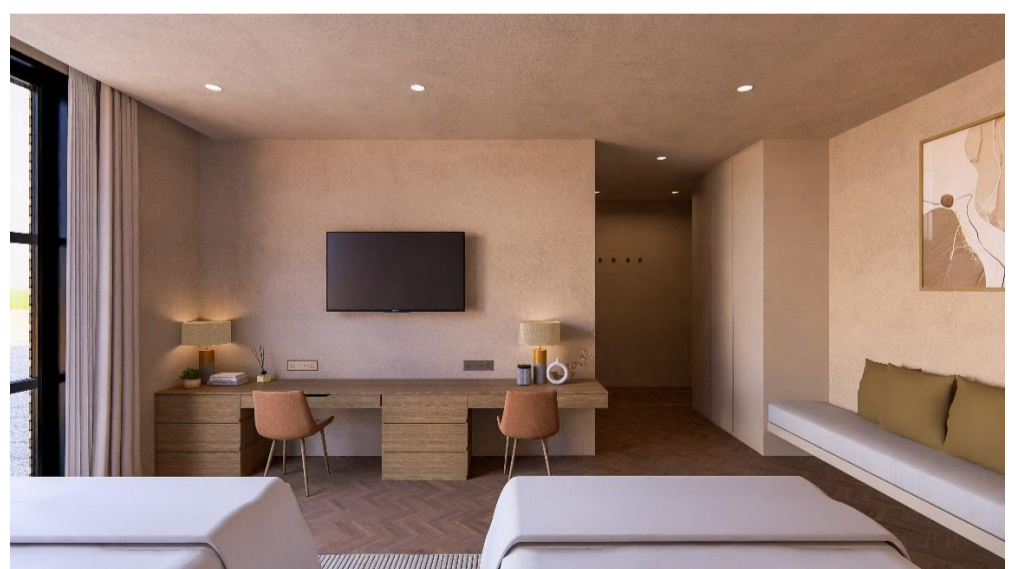
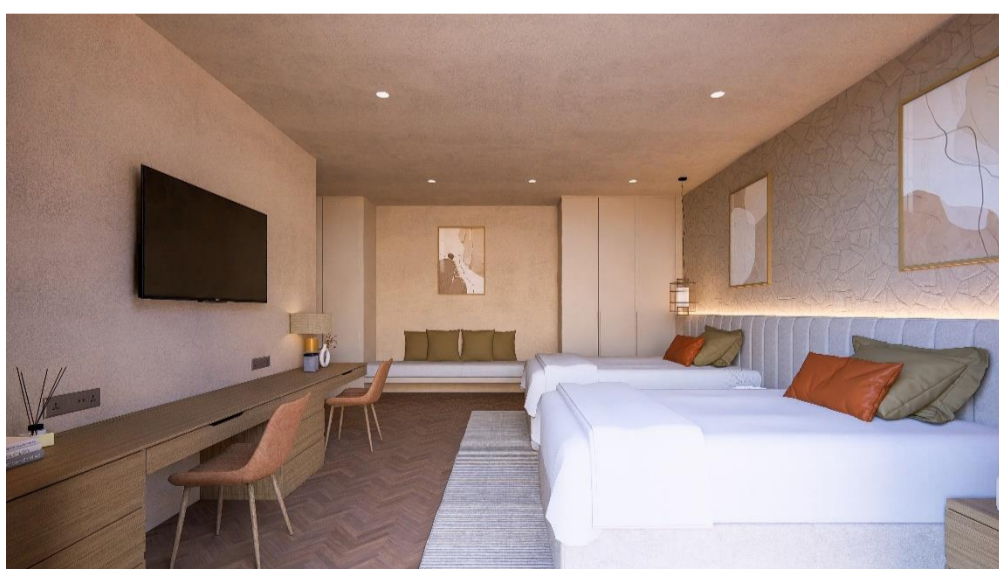
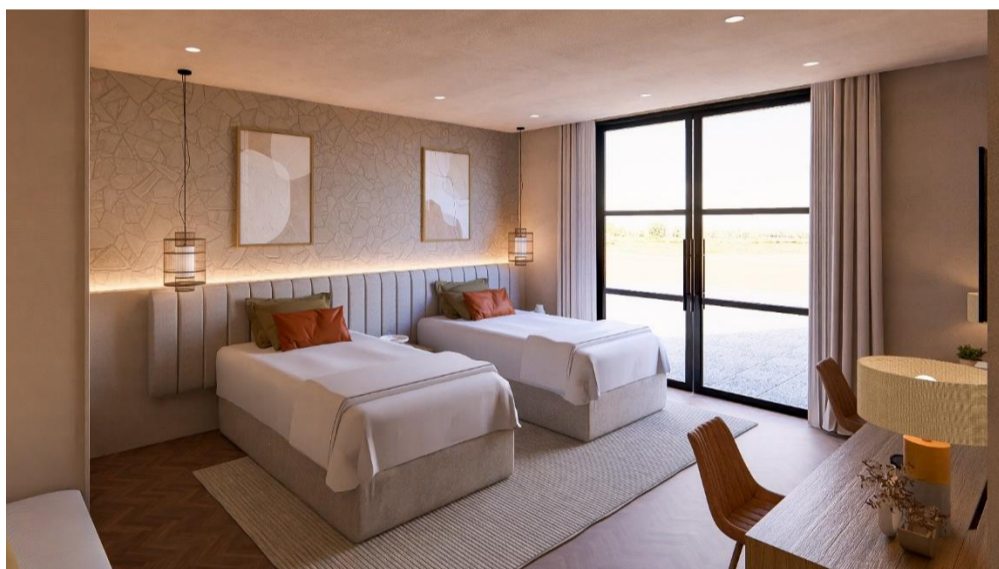
NOTE: Renders are for illustrative purposes only

REVIVA

Sample Renders: Accommodation Interiors

Features:

- Spacious >35 sq/m bedrooms
- Large windows or doors with abundant natural light
- Flexible bed configurations (King or Twin)
- Two triple wardrobes
- Dual desk spaces/dressing tables
- Well placed international + USB(s) power sockets
- Ample storage for personal items (open and enclosed)
- Soft and/or overhead lighting
- Entrance hall area with access to bathroom
- Relaxing neutrals and earth tone materials



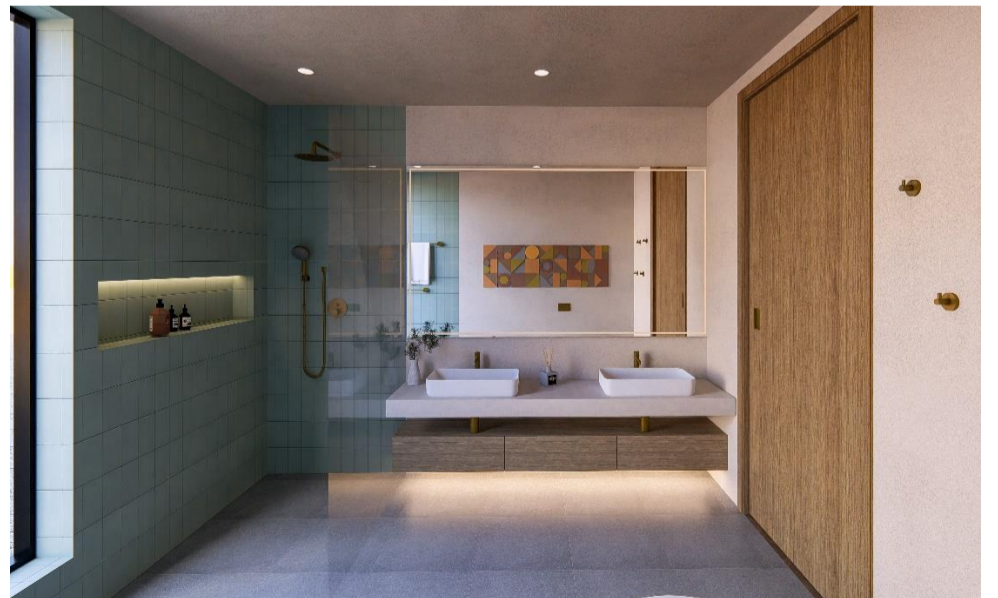
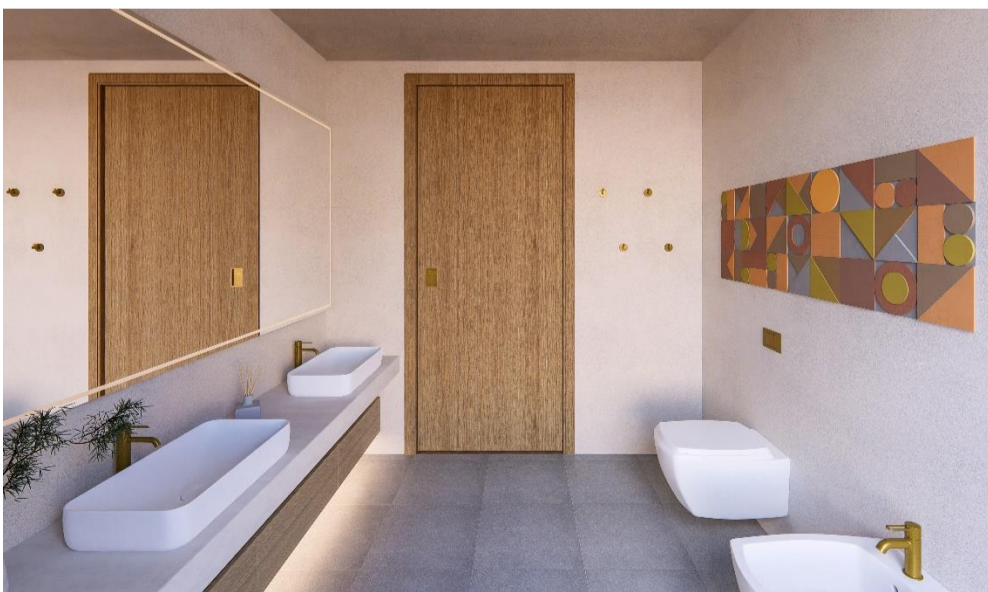
NOTE: Renders are for illustrative purposes only

REVIVA

Sample Renders: Accommodation Interiors

Features:

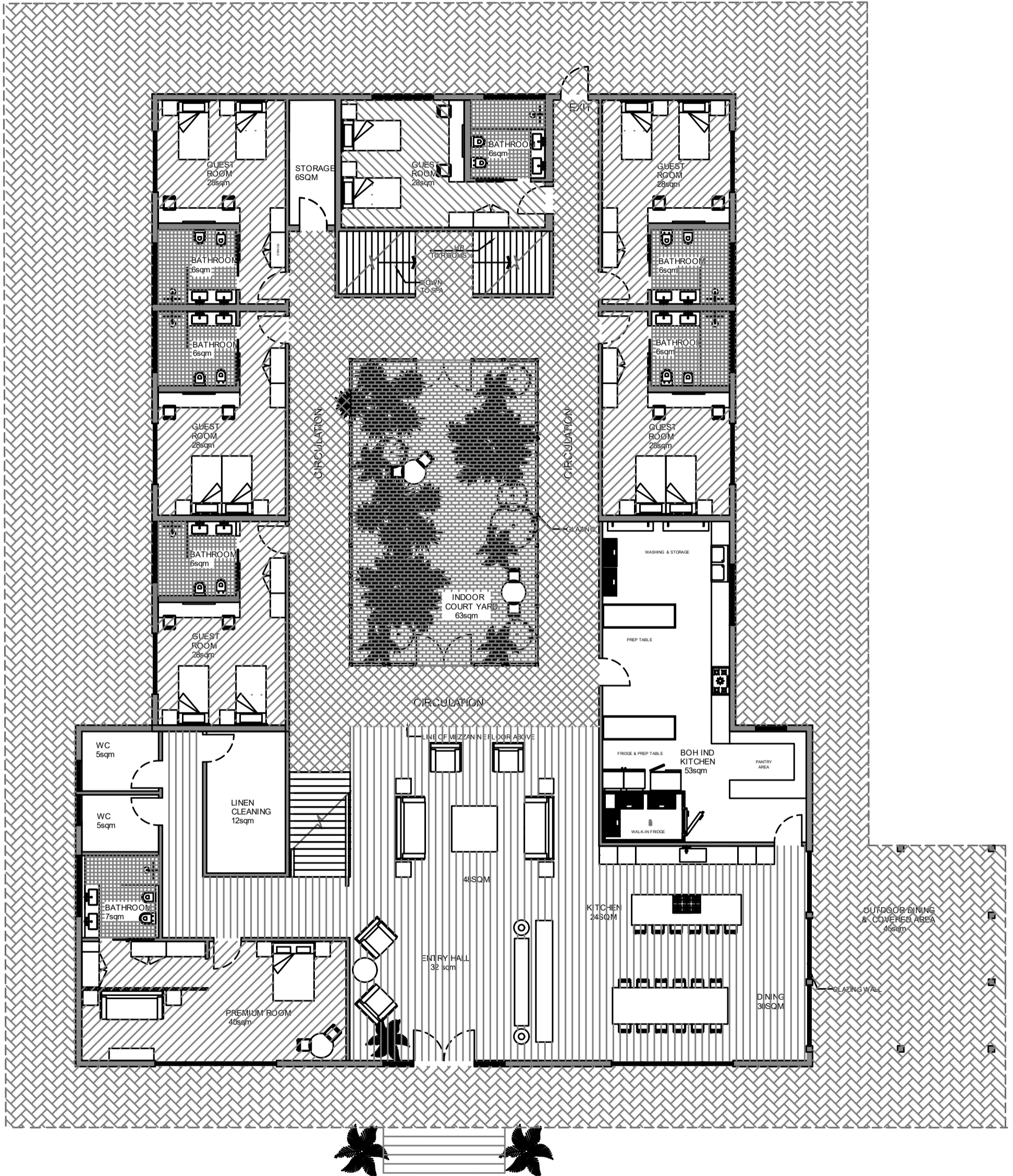
- Spacious >8 sq/m bathrooms
- Large window to allow natural light
- Dual basin/vanity units
- Rain + multi-position hand held shower
- Well placed international + USB(s) power sockets
- Ample open and enclosed storage for personal items
- Soft and/or overhead lighting
- Relaxing neutrals and earth tone materials



NOTE: Renders are for illustrative purposes only

REVIVA

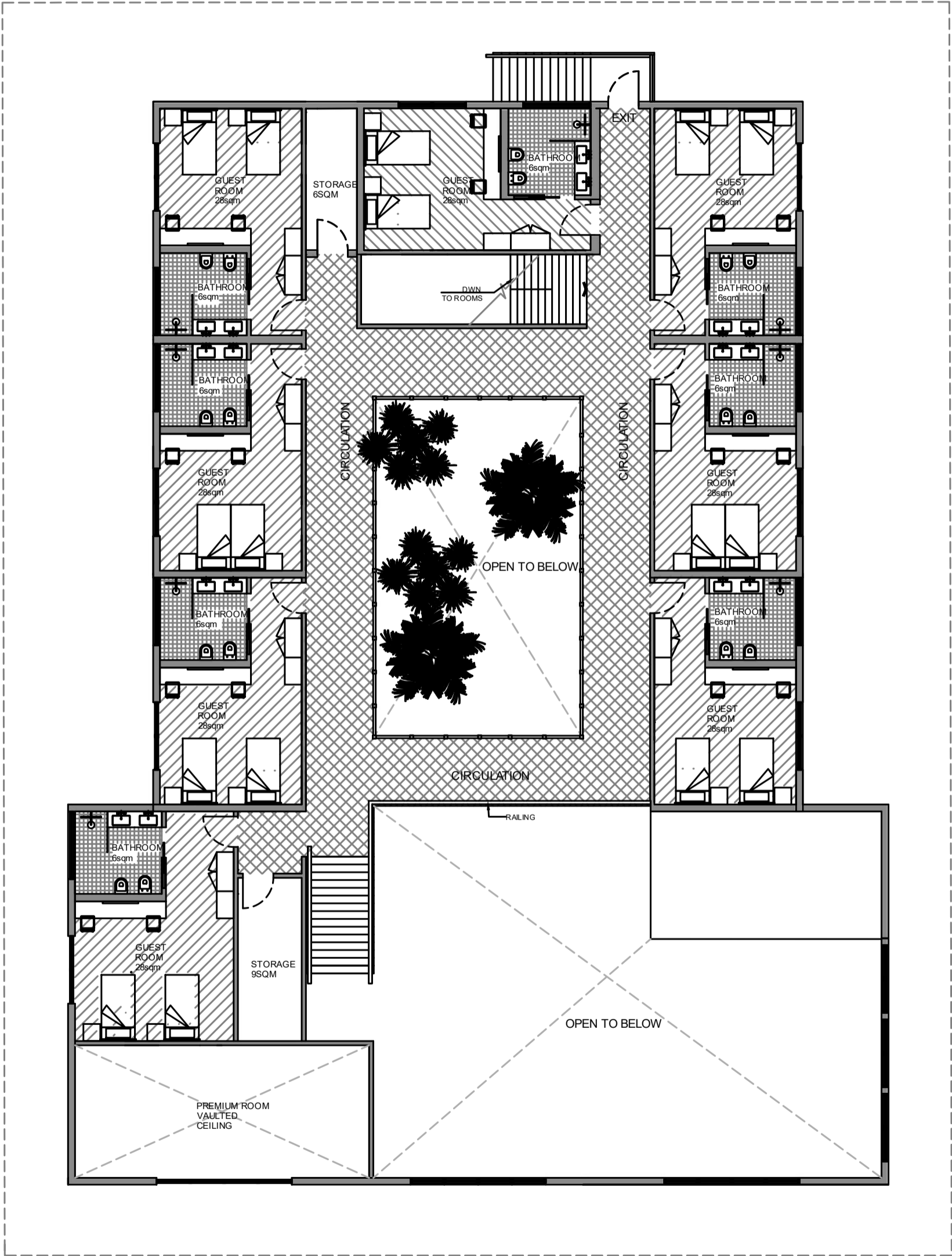
Sample Floorplan: Accommodation Ground Floor



NOTE: Floorplans for illustrative purposes only

REVIVA

Sample Floorplan: Accommodation *First Floor*



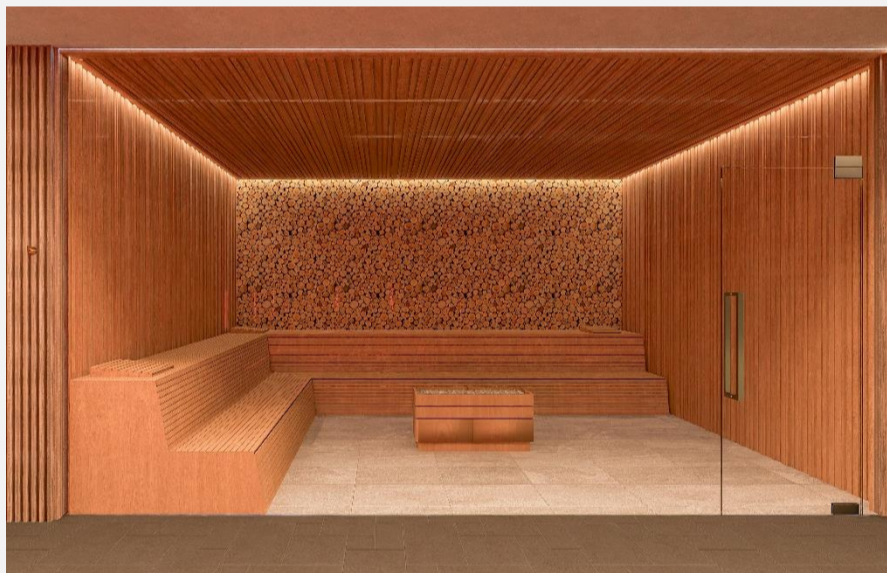
NOTE: Floorplans for illustrative purposes only

REVIVA

Sample Renders: Spa Facilities *Basement*

Features:

- >150 sq/m spa facilities
- Dry sauna
- Infrared sauna
- Steam dome
- Cold plunge pool with adjoining showers
- Relaxation area with hydration station
- Private treatment rooms
- Guest laundry facility
- Mood and recessed lighting
- Relaxing neutrals and earth tone materials

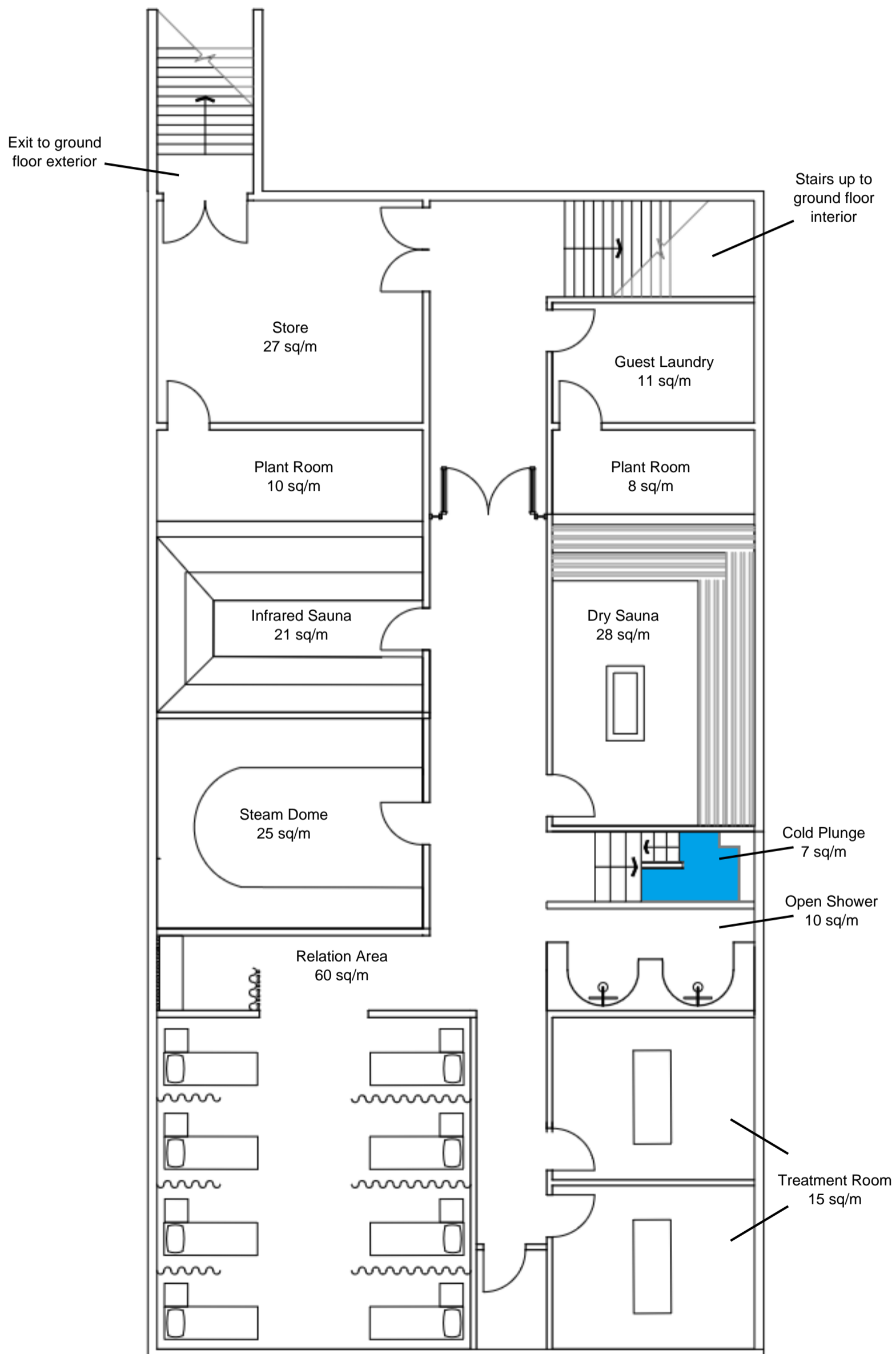


[Click for 3D walkthrough](#)

NOTE: Renders are for illustrative purposes only

REVIVA

Sample Floorplan: Spa Facilities *Basement*



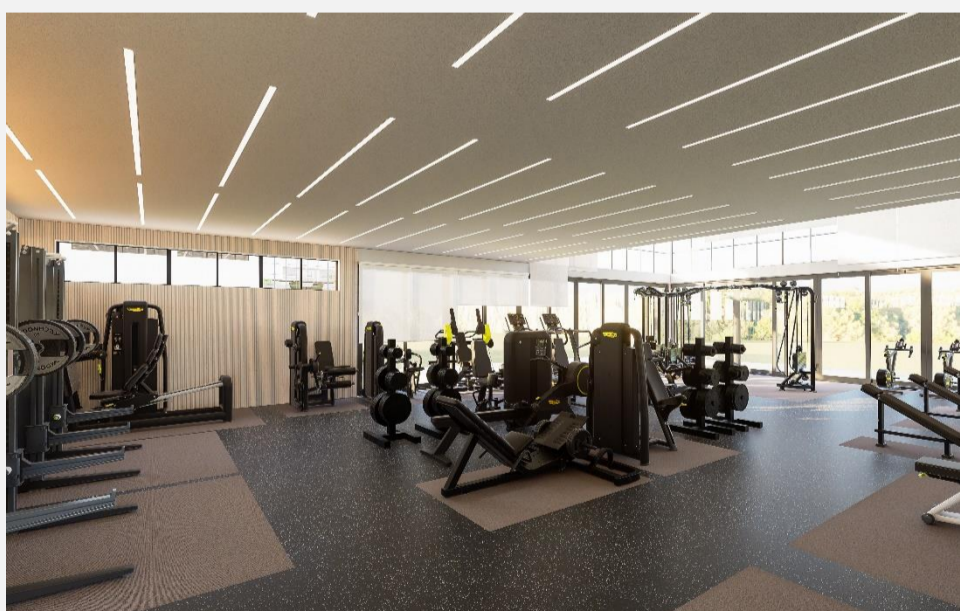
NOTE: Floorplans for illustrative purposes only

REVIVA

Sample Renders: Activity Space *Ground Floor Gym*

Features:

- >150 sq/m gym floor
- Wide range of high quality strength and cardio equipment
- Multiple changing spaces, with private showers and toilets
- Large windows and doors with abundant natural light
- Diffused bright overhead lighting
- Relaxing neutrals and earth tone materials

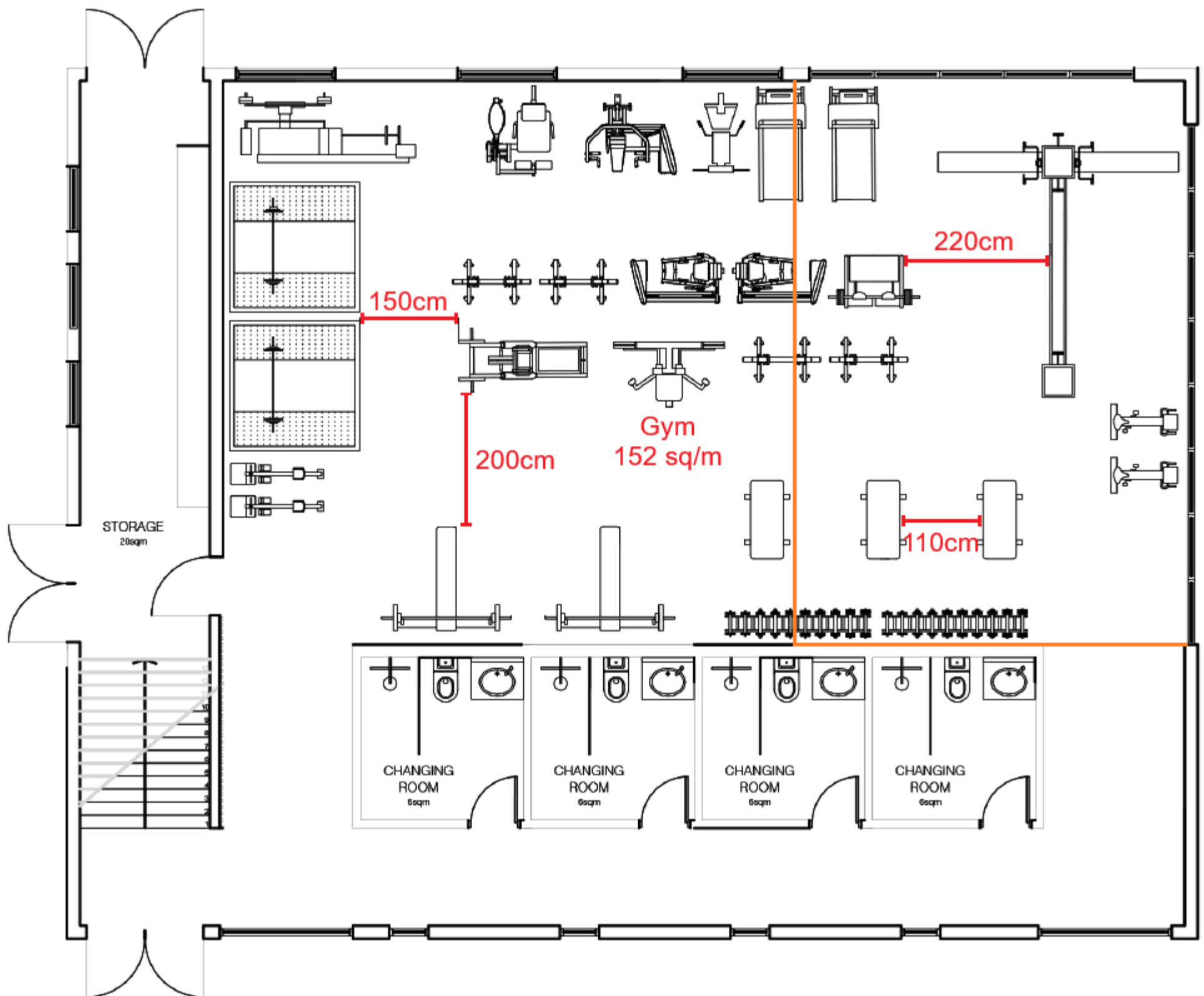


[Click for 3D walkthrough](#)

NOTE: Renders are for illustrative purposes only

REVIVA

Sample Floorplan: Activity Space *Ground Floor Gym*



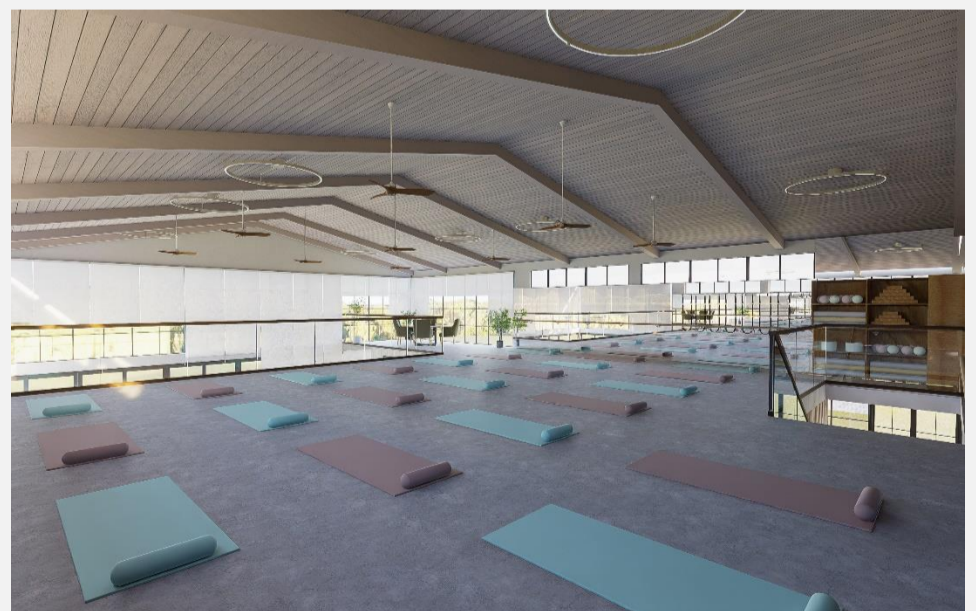
NOTE: Floorplans for illustrative purposes only

REVIVA

Sample Renders: Activity Space *First Floor Studio*

Features:

- >80 sq/m mezzanine studio with vaulted ceiling
- Space for ~17 Pilates reformers with generous spacing
- Space for ~24 yoga mats with generous spacing
- Wall space with ~ 25m of Barre fittings
- Large windows with abundant natural light
- Diffused bright overhead lighting
- Relaxing neutrals and earth tone materials

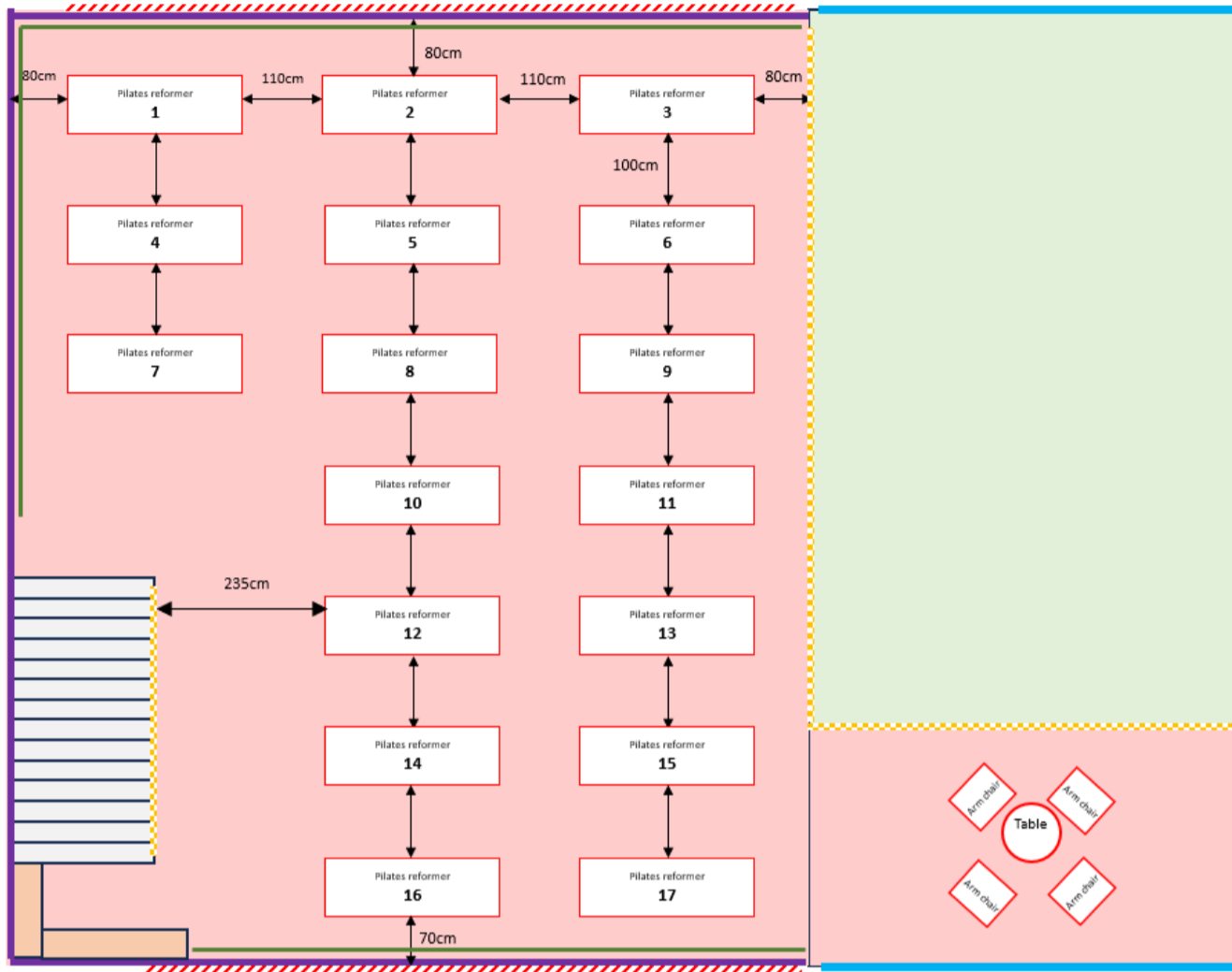


[Click for 3D walkthrough](#)

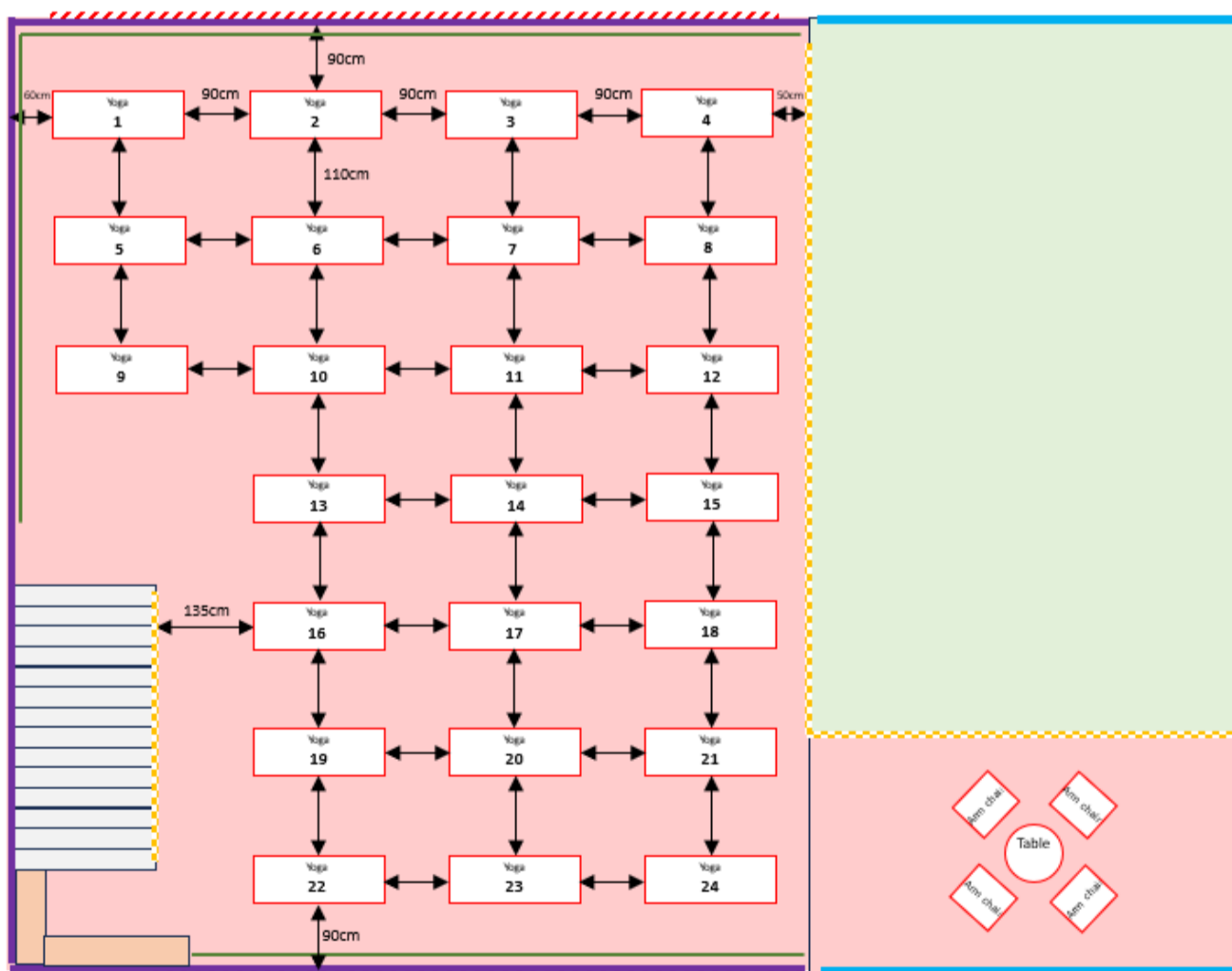
NOTE: Renders are for illustrative purposes only

REVIVA

Sample Floorplan: Activity Space *First Floor Studio*



Reformer
Pilates layout



Yoga layout

NOTE: Floorplans for illustrative purposes only